

PARTS OF SECTIONS 11, 12, 13, 14, T. 6 N., R. 3 E., S. L. B. & M.
CAUSEY ESTATES SUBDIVISION NO. 3
 IN WEBER COUNTY
 SCALE 1"=500'

PREFIX-23-088

TAXING UNIT - 58

SEE PAGE
72

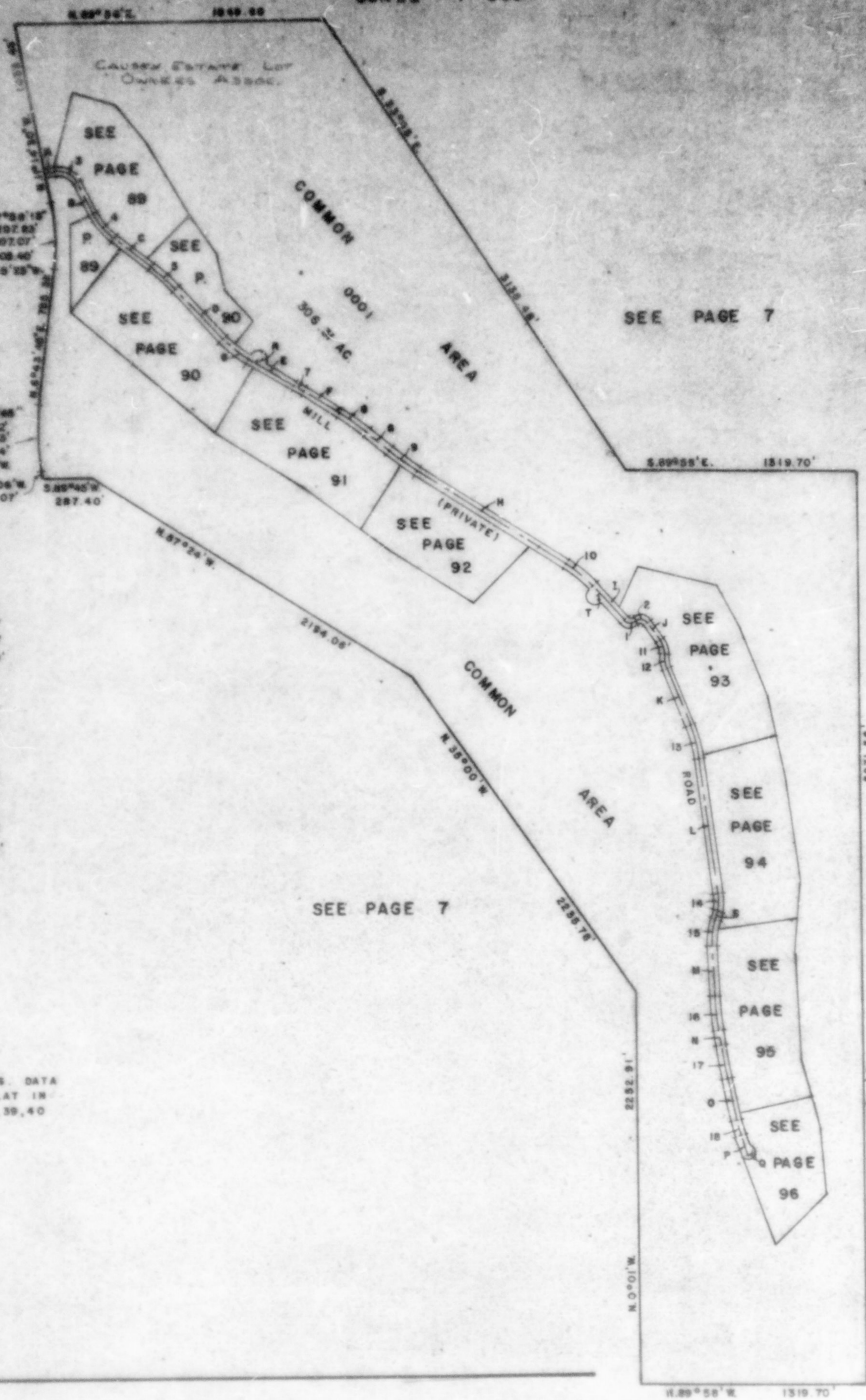
ROAD DATA

A= N. 78° 48' 30" E.	87.00'
B= S. 23° 43' 11" E.	200.00'
C= S. 82° 11' 28" E.	270.16'
D= S. 42° 46' 32" E.	406.46'
E= S. 09° 20' 11" E.	314.83'
F= S. 38° 45' 28" E.	242.82'
G= S. 50° 11' 40" E.	167.59'
H= S. 37° 31' 18" E.	1021.49'
I= S. 42° 41' 06" E.	275.38'
J= S. 38° 40' 35" E.	125.48'
K= S. 31° 31' 38" E.	387.78'
L= S. 7° 25' 12" E.	792.85'
M= S. 2° 20' 52" E.	290.09'
N= S. 8° 22' 11" E.	87.88'
O= S. 13° 40' 10" E.	259.51'
P= S. 19° 40' E.	123.88'
Q= S. 7° 20' E.	25.00'
R= N. 30° 39' 49" E.	25.00'
S= S. 18° 07' 30" W.	64.66'
T= S. 47° 18' 54" W.	28.00'

CURVE ROAD DATA

A	R	L	T
1= 78° 54' 33"	61.11'	85.81'	50.00'
2= 84° 35' 24"	52.93'	78.00'	48.00'
3= 75° 51' 18"	129.10'	170.17'	100.00'
4= 29° 28' 15"	425.17'	196.45'	100.00'
5= 9° 25' 05"	1214.0'	199.98'	100.00'
6= 18° 35' 50"	627.90'	198.51'	100.00'
7= 0° 58' 48"	8850.24'	100.00'	50.00'
8= 8° 09' 45"	1401.49'	199.86'	100.00'
9= 7° 19' 35"	1561.96'	199.73'	100.00'
10= 14° 50' 08"	768.09'	198.88'	100.00'
11= 49° 29' 08"	117.55'	101.35'	54.18'
12= 34° 40' 11"	140.18'	96.93'	50.00'
13= 14° 25' 28"	789.34'	198.94'	100.00'
14= 25° 32' 42"	530.85'	147.51'	75.00'
15= 20° 28' 22"	418.32'	148.40'	75.00'
16= 0° 01' 19"	1901.14'	199.82'	100.00'
17= 3° 17' 38"	547.83'	199.95'	100.00'
18= 7° 09' 50"	715.50'	99.84'	50.00'

FOR COMPLETE ENG. DATA
 SEE ORIG. DED. PLAT IN
 BOOK 24, PAGES 38, 39, 40



SEE PAGE 7

SEE PAGE 7